

# The South African EA Forum



Join the forum's  
subscriber list

Signup form for The Open Group – South Africa

<http://eepurl.com/foLDA>

[stuart.macgregor@opengroup.org](mailto:stuart.macgregor@opengroup.org)

Chat to Stuart if you are  
keen to present or would  
like to join The Open Group

Twitter: @EAforumSA

#ogza

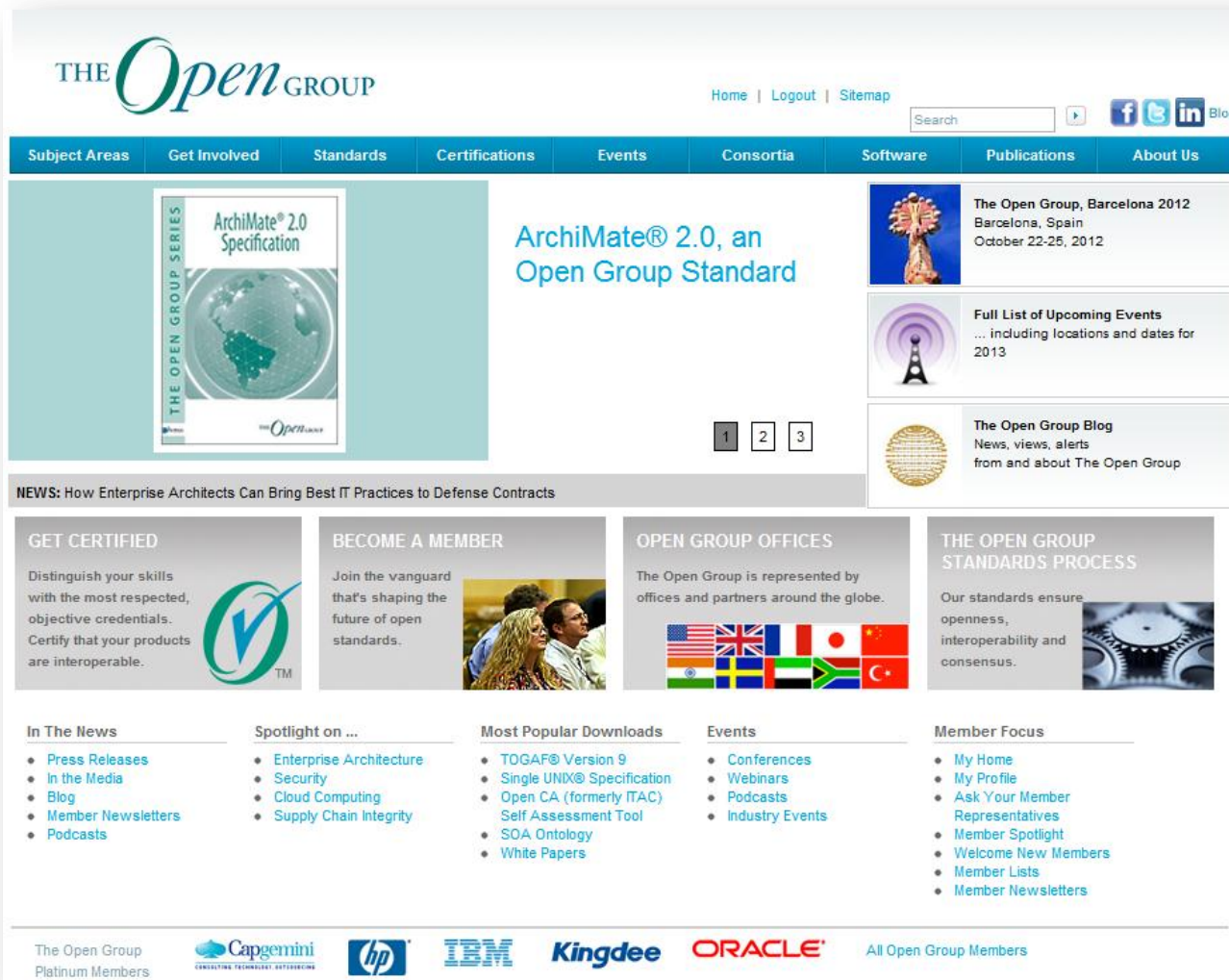
Our upcoming  
events

Follow the EA Forum  
on Twitter...

<http://opengroup.co.za/ea-forum>

THE *Open* GROUP

# Leading the development of open, vendor-neutral IT standards and certifications



The screenshot shows the homepage of The Open Group. At the top left is the logo "THE Open GROUP". To the right are navigation links: "Home | Logout | Sitemap", a search bar, and social media icons for Facebook, Twitter, LinkedIn, and a "Blog" link. Below this is a blue navigation bar with tabs: "Subject Areas", "Get Involved", "Standards", "Certifications", "Events", "Consortia", "Software", "Publications", and "About Us". The main content area features a large banner for "ArchiMate® 2.0, an Open Group Standard" with an image of the specification book. To the right of the banner are three smaller boxes: "The Open Group, Barcelona 2012", "Full List of Upcoming Events", and "The Open Group Blog". Below the banner is a "NEWS" section with the headline "How Enterprise Architects Can Bring Best IT Practices to Defense Contracts". The page is divided into several columns: "GET CERTIFIED" (with a checkmark icon), "BECOME A MEMBER" (with a photo of people), "OPEN GROUP OFFICES" (with a world map icon), and "THE OPEN GROUP STANDARDS PROCESS" (with a gear icon). At the bottom, there are five columns of links: "In The News", "Spotlight on ..." (listing Enterprise Architecture, Security, Cloud Computing, and Supply Chain Integrity), "Most Popular Downloads" (listing TOGAF® Version 9, Single UNIX® Specification, Open CA, etc.), "Events" (listing Conferences, Webinars, Podcasts, and Industry Events), and "Member Focus" (listing My Home, My Profile, Ask Your Member Representatives, etc.). The footer contains logos for Platinum Members: Capgemini, hp, IBM, Kingdee, ORACLE, and a link to "All Open Group Members".

## Forums

- Architecture Forum
- ArchiMate® Forum
- Identity Management Forum
- Jericho Forum® Management Forum
- Platform
- Real-time & Embedded Systems Forum
- Security Forum
- Trusted Technology Forum (TTF)

## Industry Forums

- Exploration, Mining, Metals & Minerals Forum

## Work Groups

- Business Architecture
- Cloud Computing
- Quantum Lifecycle Management (QLM)
- Semantic Interoperability
- Service Oriented Architecture

You are here: > Architecture Forum Members - Home

Forum Members level

Logged in as  
s.macgregor

Logout

My Open Group

Project Mailing Lists

Quick Search

Advanced Search

Administrivia  
 Forum Strategy  
 Document (pdf)  
 Consent Log

Forum Projects  
 Events Calendar  
 Join  
 About

Documents  
 Add Document

Meeting Minutes

Feedback  
 TOGAF Defect  
 Reporting

Forum Resources  
 Forum Wiki  
 WebSVN  
 Bug Tracker  
 TOGAF Slide Decks  
 TOGAF 9.1 (pdf)  
 TOGAF 9.1 (html)  
 TOGAF 9 (EPF output)  
 TOGAF Downloads  
 TOGAF 8.1.1  
 Whitepapers

Liaisons  
 ArchiMate Forum  
 TOGAF next Security

Home

Documents

Recent Review Documents

Recent News

Current Votes

Welcome to The Open Group Architecture Forum members' web site.

This is the starting point for information about the forum's projects, project deliverables, recent and upcoming members' meetings, email archives, how to subscribe to / unsubscribe from mailing lists, and how to flip your subscription between access-only and access-plus-email.

If you are new to the forum please look at the [Administrivia](#) information and our [Procedures and Tutorials](#) section.

Self subscription to projects is now back online - select Project Mailing Lists on the left Panel. To manage your other activities within The Open Group select "My Open Group"

Please note that materials from past meetings and inactive work streams has moved to the Archived status within the Document register. To locate these materials, click the Documents tab, pull down the applicable Category descriptor, select the Archived radio box, then click on Reselect.

When posting or updating materials please use the default visibility of *Forum Members*. Please note that the level *Cross Forum* is used for reviews that need to be accessible to all Open Group members.

**The Architecture Forum Calendar**

Select Timezone: < [Los Angeles](#) \* [Denver](#) \* [Chicago](#) \* [New York](#) \* [UK](#) \* [CET](#) \* [Dubai](#) \* [India](#) \* [Hong Kong](#) \* [Tokyo](#) \* [Sydney](#) >

ICAL



Currently the forum uses a Google calendar for group scheduling. For more information on the Architecture Forum Calendar see [here](#)

<p> <b>Current Votes</b> <span style="float:right">Add </span></p>	<p> <b>Materials: Cannes 2012</b> <span style="float:right">Add </span></p>
<p>(No Current Votes available)</p>	<p>09-May-12 (latest change) 17 Documents <span style="float:right">→ Show/Hide</span></p>
<p> <b>Recent News</b> <span style="float:right">Add </span></p>	<p> <b>Materials: San Francisco 2012</b> <span style="float:right">Add </span></p>
<p>★ 01-Dec-11 <a href="#">TOGAF 9.1 Defect Reporting</a>  <span style="float:right">→ more</span></p>	<p>07-Feb-12 (latest change) 11 Documents <span style="float:right">→ Show/Hide</span></p>
<p> <b>Recent E-Mail for ogarchmain-updates-I</b> <span style="float:right"></span></p>	<p> <b>Materials: Washington DC 2012</b> <span style="float:right">Add </span></p>
<p>22-Jul-12 Document [Minutes: Washington review: Work-Pro ...</p>	<p>19-Jul-12 (latest change) 16 Documents <span style="float:right">→ Show/Hide</span></p>
<p>20-Jul-12 Document [VR WG Minutes Washington Jul-17 1-0] ...</p>	<p> <b>Meeting Minutes</b> <span style="float:right">Add </span></p>
<p>20-Jul-12 Document [Q3 next steps 1.0] created</p>	<p>24-Jul-12 (latest change) 304 Documents <span style="float:right">→ Show/Hide</span></p>
<p>19-Jul-12 Document [TOGAF next Forum Report ] created</p>	<p> <b>Procedures, Tutorials and Templates</b> <span style="float:right">Add </span></p>
<p>19-Jul-12 Document [Forum Meeting Chart ] created</p>	<p>21-Jun-12 (latest change) 16 Documents <span style="float:right">→ Show/Hide</span></p>
<p>19-Jul-12 Document [EA Improvement Assessment project ch ...</p>	
<p>19-Jul-12 Document [Business Architecture using a meta-m ...</p>	

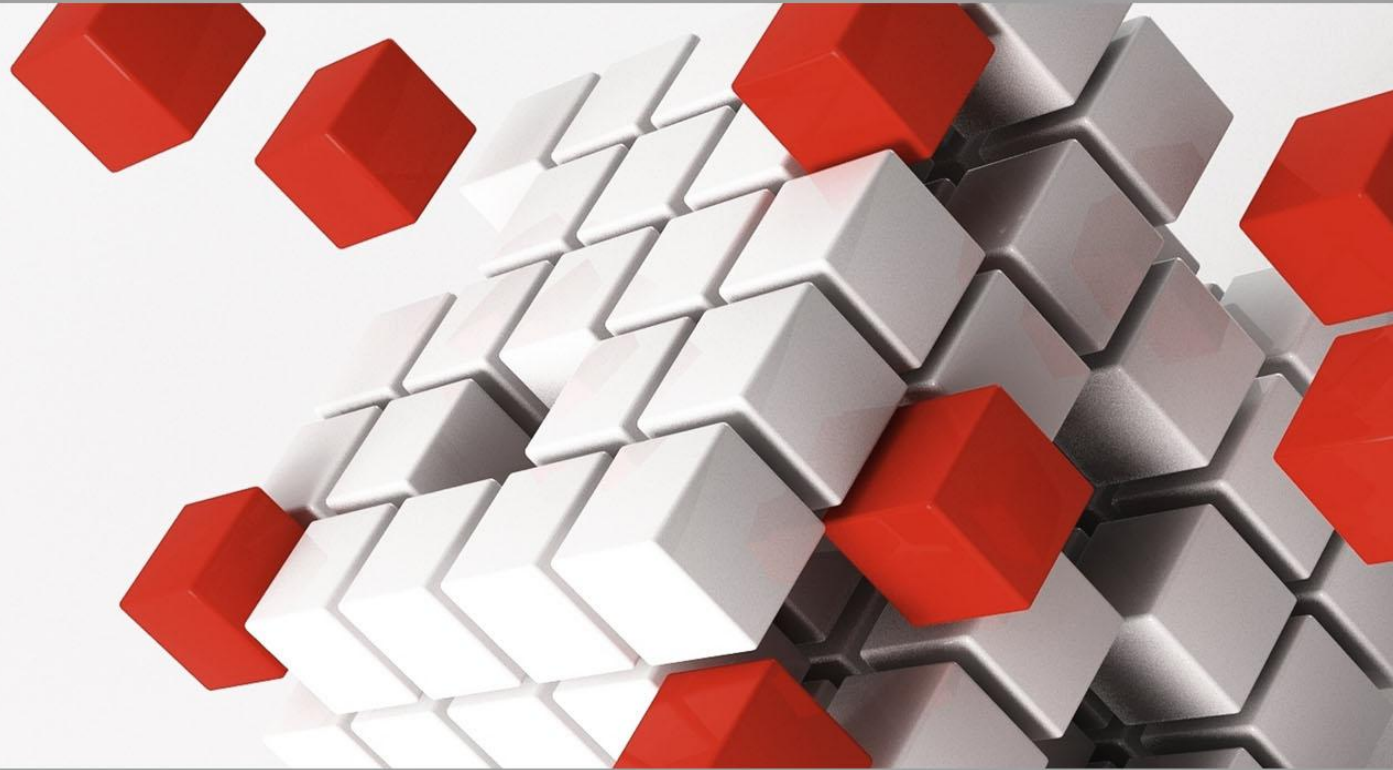
# TOGAF next work streams

- ❑ TOGAF next Part 1 - the continued effort to create a clear, cohesive, comprehensive & consistent EA Framework
- ❑ TOGAF next Part 2: Guide to Architecture for the purpose of Strategy, Project, & Program - the effort to craft a how-to guide aimed at the leader of an EA Team
- ❑ TOGAF next Part 2: Guide to Business Architecture - the effort to craft a how-to guide for the business architecture domain
- ❑ TOGAF next Part 2: Guide to Application Architecture - the effort to craft a how-to guide for the application architecture domain
- ❑ TOGAF next Part 2: Guide to Data/Information\* Architecture - the effort to craft a how-to guide for the Data/Information architecture domain
- ❑ TOGAF next Part 2: Guide to Information Technology Architecture - the effort to craft a how-to guide for the information technology architecture domain
- ❑ TOGAF next Part 2: Guide to High Assurance Architecture - an effort just starting to craft a how-to guide for the high assurance - this guide is being led as a separate initiative by the RTES Forum.
- ❑ TOGAF next Security Project - this is an associated initiative by the Security Forum to ensure Security & Risk are properly integrated in Part 1 & the 4 Architecture Forum Part 2 guides

# Johan Schoeman

---

- ❑ The use of a modelling tool is often assumed to be “a given” for an Enterprise Architecture (EA) effort. While this is usually the case, the use of a modelling tool does not necessarily mean that EA is being done. Similarly, not all EA efforts make use of traditional modelling tools. At this month’s EA Forum, Johan Schoeman will discuss the use of modelling tools for EA and give a demonstration of the typical functions that modelling tools provide. In addition, the presentation will include the requirements for implementing a modelling tool within an EA environment, and a look at the modelling tool market within a South African context.
- ❑ Johan is a senior EA consultant at Real IRM. He has over 8 years of experience in EA, with a specialist focus on modelling tool implementations for EA capabilities across a number of toolsets and industries.



# The Use of Modelling Tools for Enterprise Architecture





# Real IRM Positioning w.r.t. EA Tools

**realIRM** LEADING ENTERPRISE ARCHITECTURE VALUE™

HOME ABOUT US ENTERPRISE ARCHITECTURE PROFESSIONAL SERVICES EA TOOLS EDUCATION EVENTS THE OPEN GROUP CONTACT US

**Real IRM takes you from EA Tool Selection**

**ENTERPRISE ARCHITECTURE TOOLS**

**EA TOOLS DEVELOPMENT CENTRE**  
We enhance your EA Practice's capability to support your stakeholders and thereby realise business value.

**OUR PRODUCTS & SERVICES**

**Utilities**  
Our utilities customise products from the enterprise architecture by presenting the information in the context and style that is familiar to the users.

**EA Toolset Selection**  
We help you choose the EA toolset most suited to your company's needs.

**WHAT MAKES OUR TECHNICAL SOLUTIONS UNIQUE?**

- » We have over 10 years of experience in building add-ons for EA Toolsets
- » We are EA specialists with real world experience
- » We are EA toolset-independent
- » We are Microsoft implementation partners
- » We are skilled Java programmers
- » We are experienced systems integrators
- » We provide products and services world-wide
- » We use our own tools internally to support our consulting offering
- » We have never taken commission for a toolset sale or selection recommendation
- » We have multi-national experience in running outsourced EA practices
- » We have in-depth experience with the implementation and use of most of the major EA toolsets on the market

**COMPANY**  
• Company Profile  
• Contact Us  
• Our Clients

**CONSULTING**  
• Change Leadership  
• EA Capability Building  
• EA Capability Planning  
• EA Practice

**TECHNICAL**  
• EA Tools Development Centre  
• EA Tools Utilities & Services  
• Enterprise Architecture Tools

**EDUCATION**  
• Training Schedule  
• EA Framework Courses  
• EA Techniques Courses  
• EA Tools Courses

**LEGAL**  
• Copyright  
• Disclaimer  
• Privacy  
• T&Cs

**SOCIAL LINKS**  
Twitter LinkedIn

Real IRM takes you from EA Tool Selection

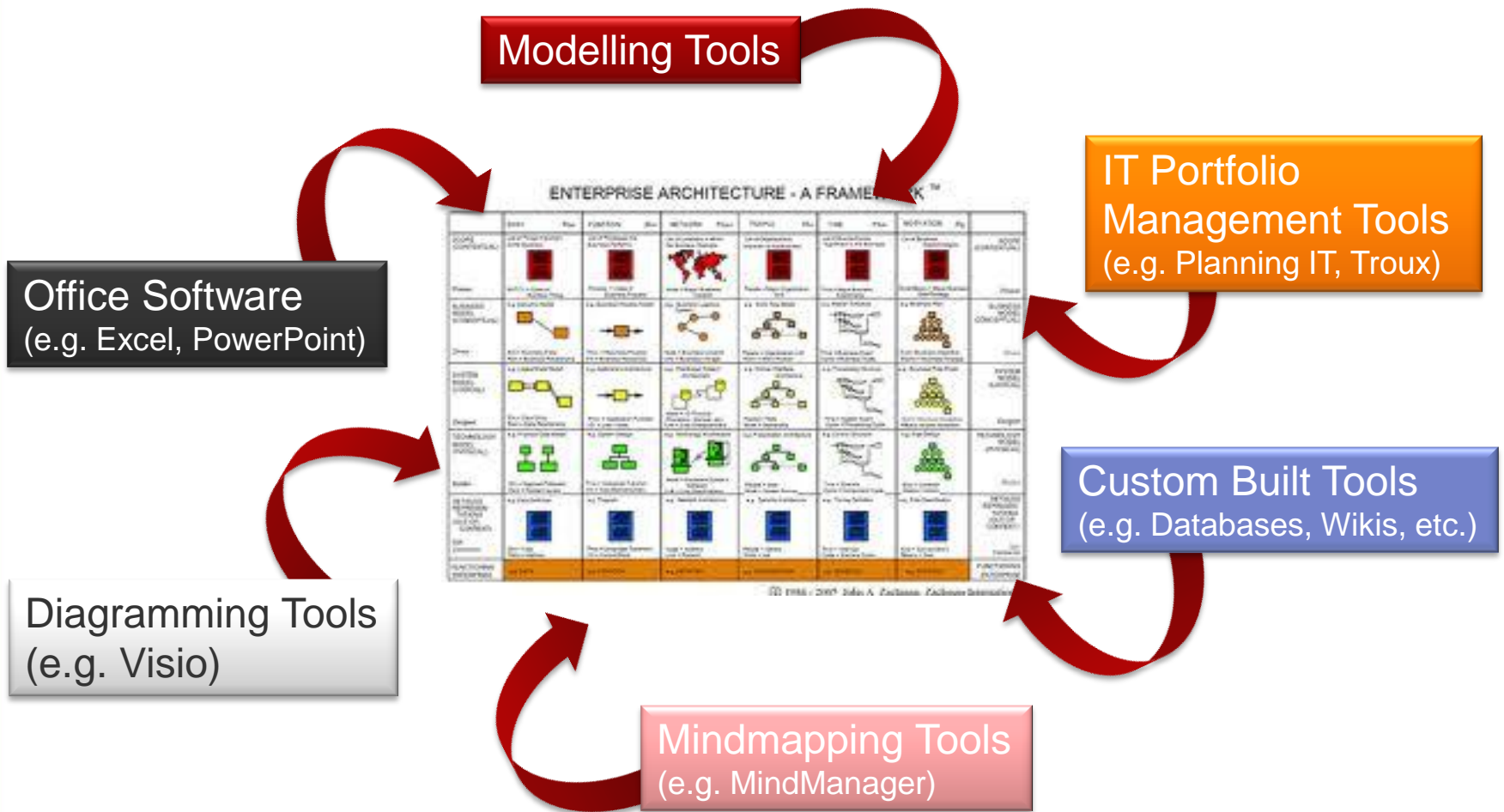
» We are EA toolset-independent

» We have never taken commission for a toolset sale or selection recommendation

» We have in-depth experience with the implementation and use of most of the major EA toolsets on the market

# EA Tools

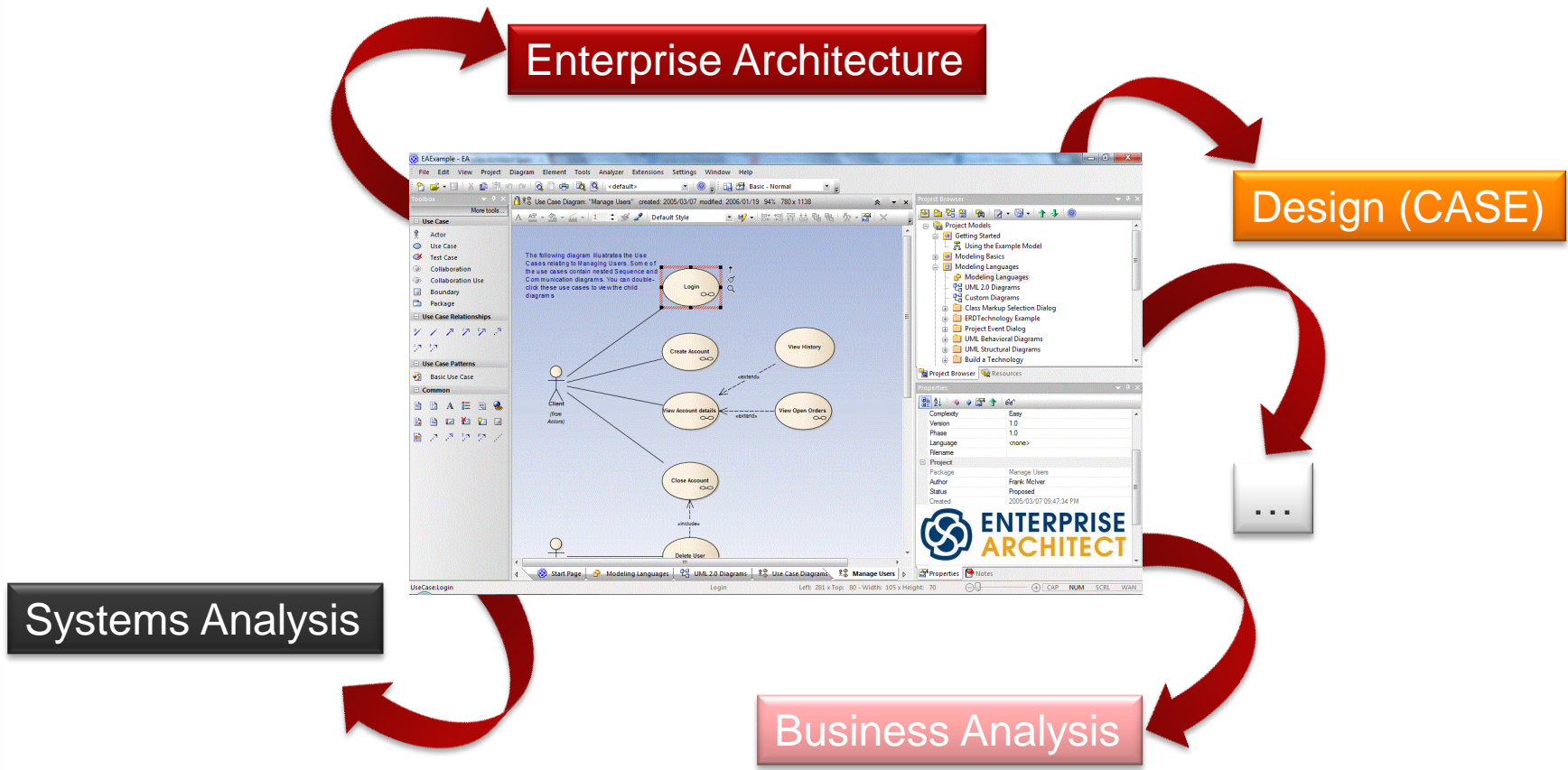
EA tools could include a number of types of that are not necessarily traditional modelling tools.





# The Use of Modelling Tools

While often related to EA, modelling tools can be used for a number of purposes that do not necessarily have an EA focus.



# Modelling Languages & Frameworks

There are a number of modelling languages and frameworks used in the EA space

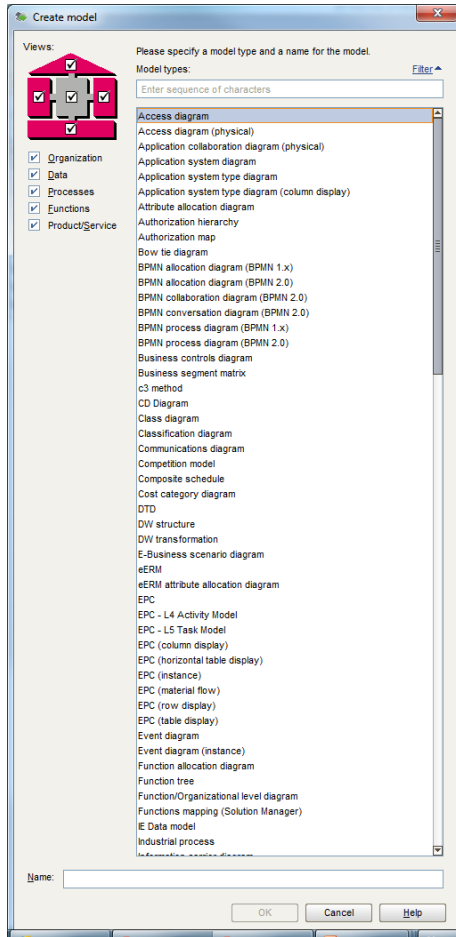


# Modelling Tools Support Many of these Notations & Frameworks

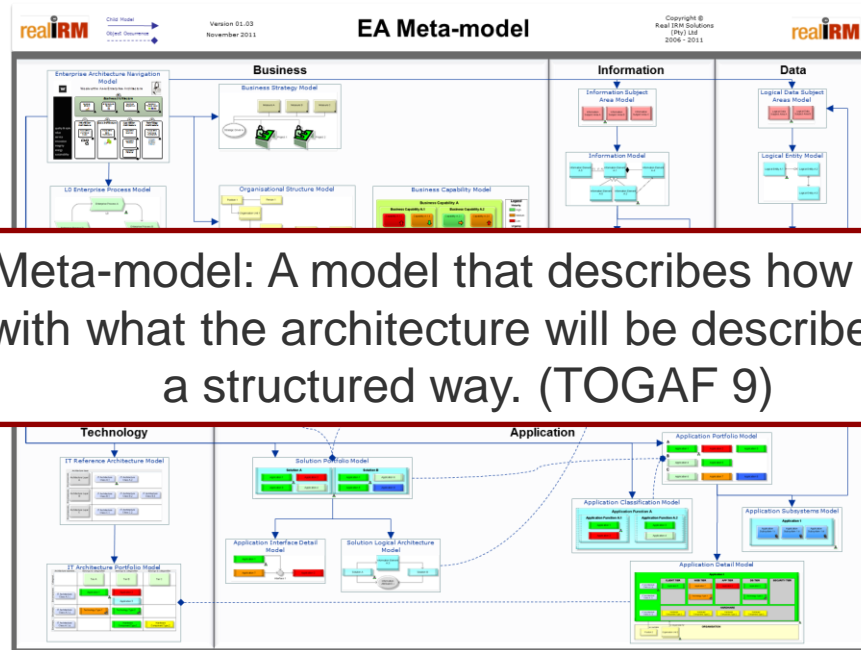
The screenshot displays the ArchiMate software interface with several windows open. The main window shows a TOGAF 9.0 diagram with a central 'TOGAF' logo. The diagram is divided into four quadrants: Architectural Context (Strategic Context), Business Architecture (Motivation, Organisation), Data Architecture (Data Entity), and Technology Architecture (Physical Component, Logical Component). A 'Lane' is highlighted in the Business Architecture quadrant, containing an 'Actor' and a 'Location'. The right-hand side of the interface shows a 'Lane - General' and 'Lane - Properties' panel. The 'Lane - Properties' panel includes a table with the following data:

Category	Name	Value	Unit
Behaviour - 5 item(s)	Bandwidth	0	
	Message Rate	14	
	Processors	8	People
	Speed	8	hours/day
BPMN - 4 item(s)	Utilisation	53.00	%
	Documentation		
	Id	4.1	
	Name	Lane	

# Need for a Meta-model

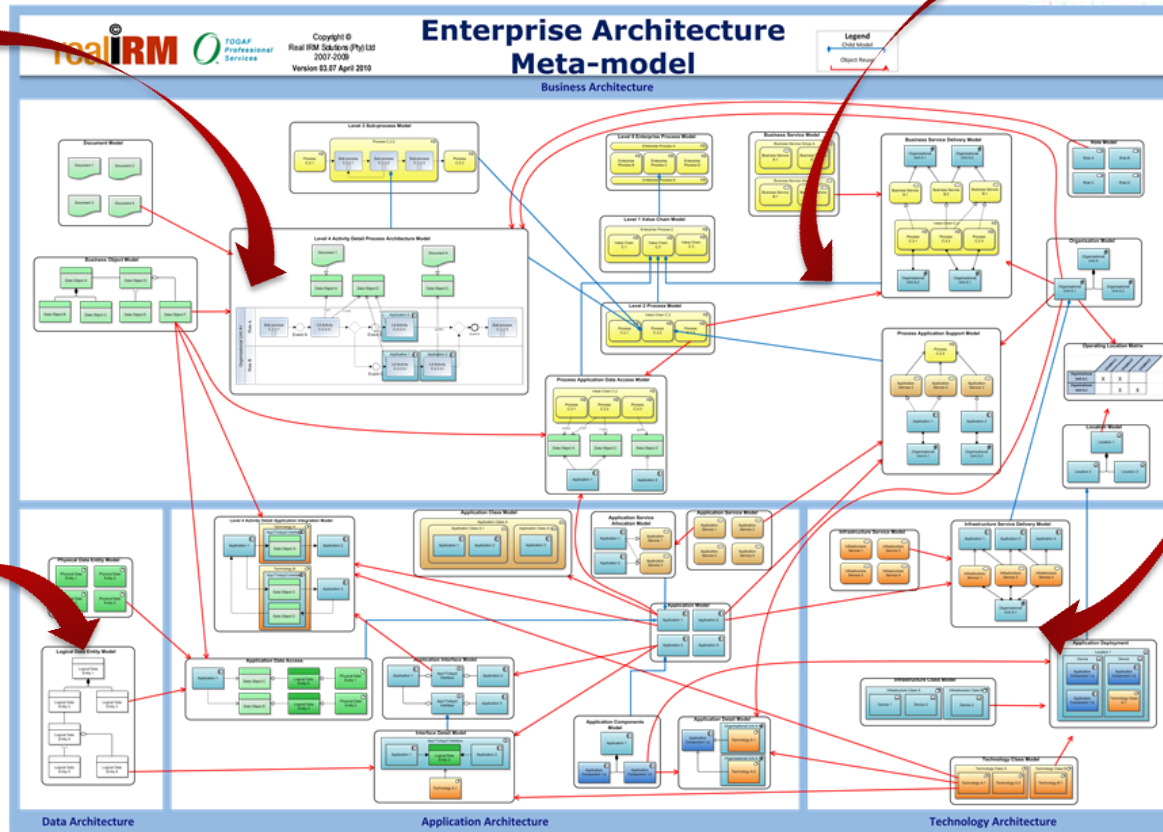


In addition to the industry standard notations, most tools also come with a number of proprietary model types and frameworks.

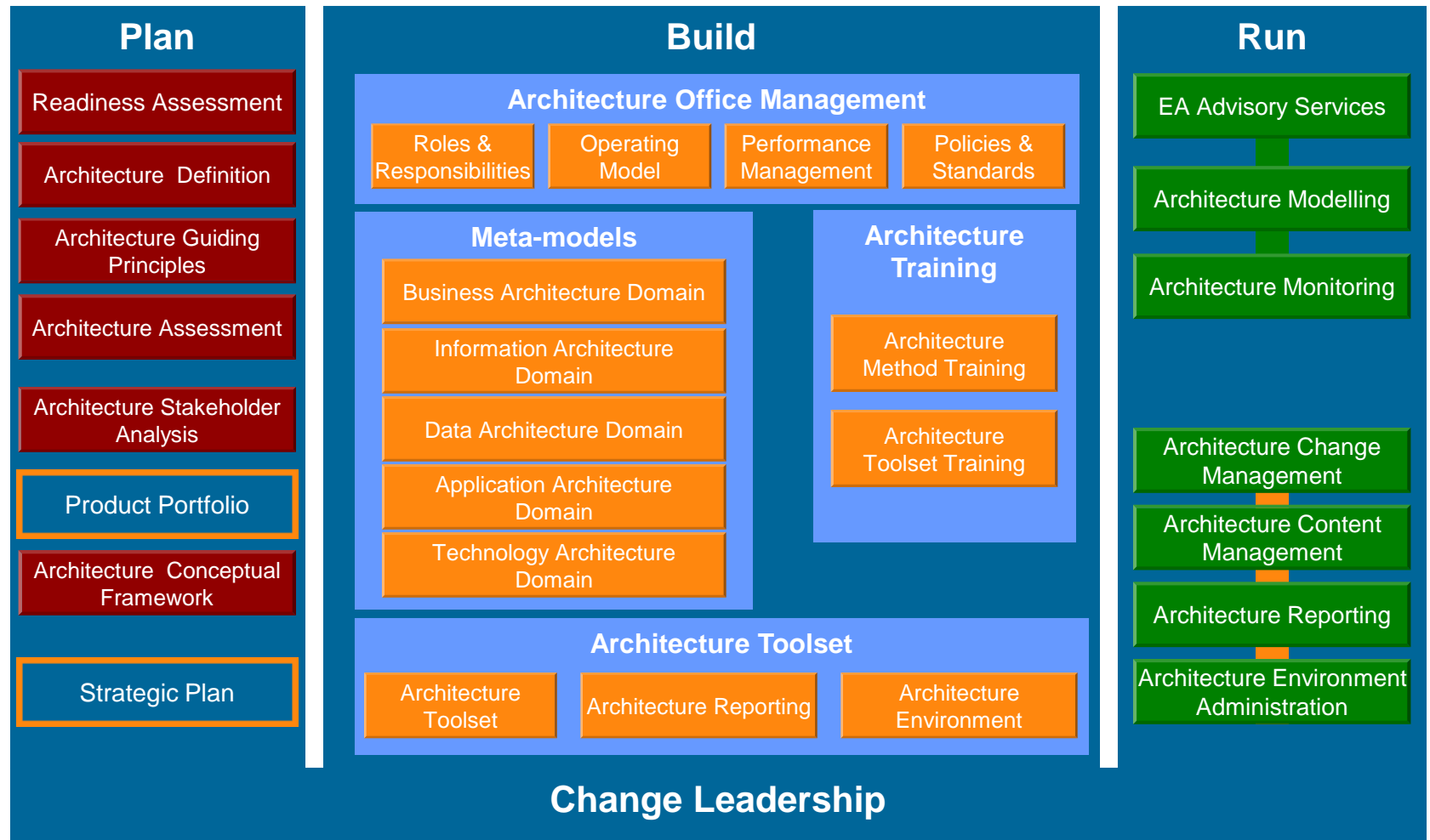


Meta-model: A model that describes how and with what the architecture will be described in a structured way. (TOGAF 9)

# Meta-models Often Include Various Modelling Notations

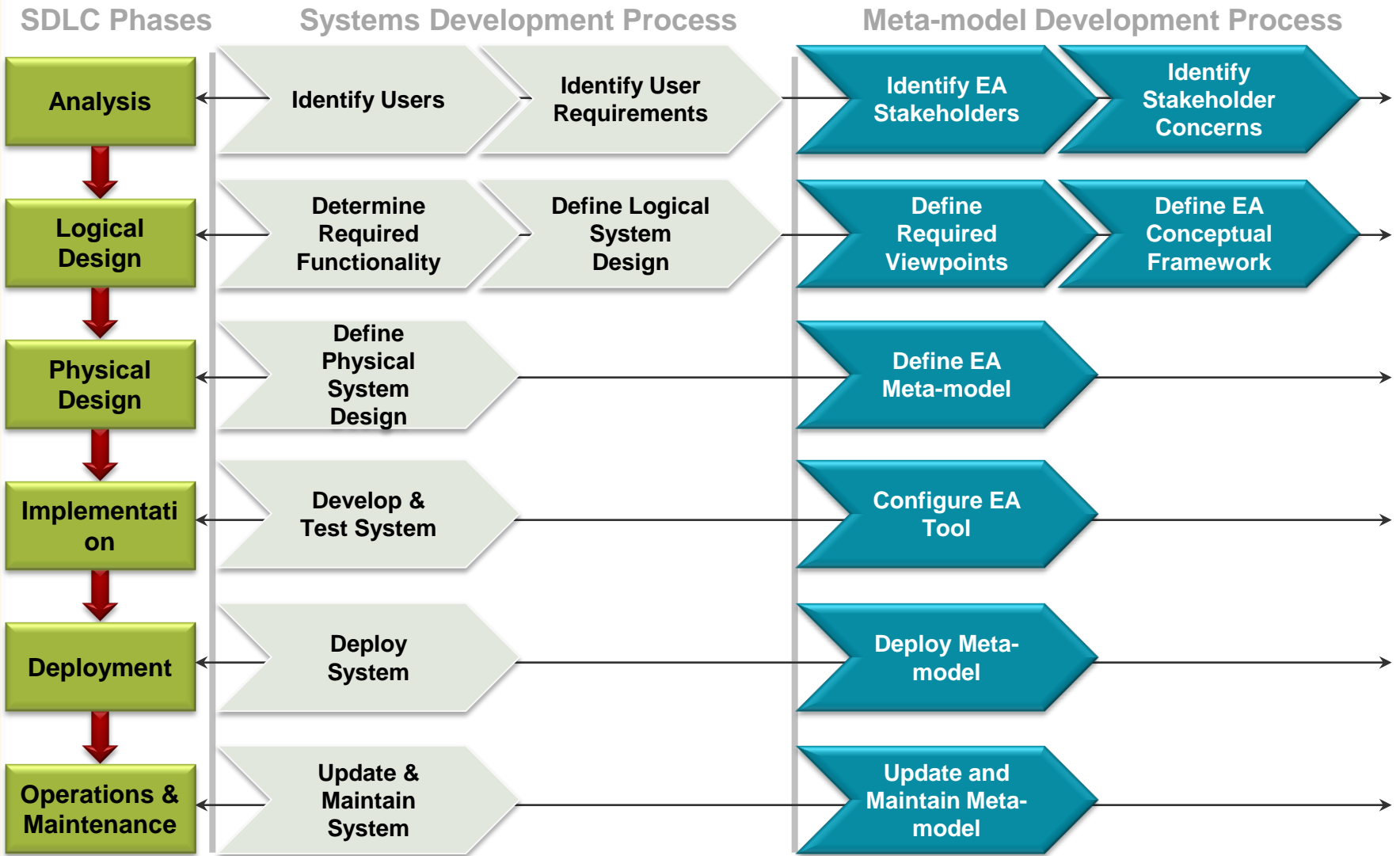


# Need for a Structured Approach to Implement an EA Capability





# Understand & Cater for User Needs



# Modelling Tools in SA Market



IBM Rational System Architect



# Modelling Tool Features

## Modelling

- Central repository
- Object based
- Reuse
- Associations
- Model, Object & Association Attributes
- Drill down

# Modelling Tool Features

## Publishing

ABACUS: Publish To Web

file://192.168.88.250/Johan%20(F)/Client%20Data/Tools/ABACUS/Published/Published/index.html

Real IRM Solutions ... Real IRM Solutions ... bigjsko@gmail.com My Drive - Google D... Twitter New Tab Google Apps Sync f... Anglo ARIS Options - Personal S... Other bookmarks

- Meta-model
  - Standards
  - Types
  - Templates
  - Viewpoints
- Architectures
  - Meta-Model (Phase 1)
  - 2009 Actual
  - 2010 Actual
  - 2011 Actual

**Name: Infrastructure Diagram (Submit Feedback)**

Sydney, Australia (Global)

Data Centre (Data Centre)

London, UK (Regional)

Virginia, US (Regional)

Siegburg, Germany (Country)

Warkington, NZ (Country)

Johannesburg, South Africa (Country)

Internet (I)

OS01 (HP Blade 460)

OS02 (HP 9000-N)

OS03 (IBM p590)

OS04 (IBM p590)

OS05 (Nortel 5500)

OS06 (IBM p590)

OS07 (Nortel 5500)

OS08 (IBM p590)

OS09 (Nortel 5500)

OS10 (IBM p590)

OS11 (Nortel 5500)

OS12 (IBM p590)

OS13 (Nortel 5500)

OS14 (IBM p590)

OS15 (Nortel 5500)

OS16 (IBM p590)

OS17 (Nortel 5500)

OS18 (IBM p590)

OS19 (Nortel 5500)

OS20 (IBM p590)

OS21 (Nortel 5500)

OS22 (IBM p590)

OS23 (Nortel 5500)

OS24 (IBM p590)

OS25 (Nortel 5500)

OS26 (IBM p590)

OS27 (Nortel 5500)

OS28 (IBM p590)

OS29 (Nortel 5500)

OS30 (IBM p590)

OS31 (Nortel 5500)

OS32 (IBM p590)

OS33 (Nortel 5500)

OS34 (IBM p590)

OS35 (Nortel 5500)

OS36 (IBM p590)

OS37 (Nortel 5500)

OS38 (IBM p590)

OS39 (Nortel 5500)

OS40 (IBM p590)

OS41 (Nortel 5500)

OS42 (IBM p590)

OS43 (Nortel 5500)

OS44 (IBM p590)

OS45 (Nortel 5500)

OS46 (IBM p590)

OS47 (Nortel 5500)

OS48 (IBM p590)

OS49 (Nortel 5500)

OS50 (IBM p590)

OS51 (Nortel 5500)

OS52 (IBM p590)

OS53 (Nortel 5500)

OS54 (IBM p590)

OS55 (Nortel 5500)

OS56 (IBM p590)

OS57 (Nortel 5500)

OS58 (IBM p590)

OS59 (Nortel 5500)

OS60 (IBM p590)

OS61 (Nortel 5500)

OS62 (IBM p590)

OS63 (Nortel 5500)

OS64 (IBM p590)

OS65 (Nortel 5500)

OS66 (IBM p590)

OS67 (Nortel 5500)

OS68 (IBM p590)

OS69 (Nortel 5500)

OS70 (IBM p590)

OS71 (Nortel 5500)

OS72 (IBM p590)

OS73 (Nortel 5500)

OS74 (IBM p590)

OS75 (Nortel 5500)

OS76 (IBM p590)

OS77 (Nortel 5500)

OS78 (IBM p590)

OS79 (Nortel 5500)

OS80 (IBM p590)

OS81 (Nortel 5500)

OS82 (IBM p590)

OS83 (Nortel 5500)

OS84 (IBM p590)

OS85 (Nortel 5500)

OS86 (IBM p590)

OS87 (Nortel 5500)

OS88 (IBM p590)

OS89 (Nortel 5500)

OS90 (IBM p590)

OS91 (Nortel 5500)

OS92 (IBM p590)

OS93 (Nortel 5500)

OS94 (IBM p590)

OS95 (Nortel 5500)

OS96 (IBM p590)

OS97 (Nortel 5500)

OS98 (IBM p590)

OS99 (Nortel 5500)

OS100 (IBM p590)

SAN (EMC Symmetrix)

You can use any vector-based shapes simply by importing them from MS Visio and adding them to your Shapes library. For more information click here to be taken to the relevant help topic.

Location Catalogue Server Catalogue Security Device Catalogue

Desktop Catalogue Network Element Catalogue Circuit Catalogue

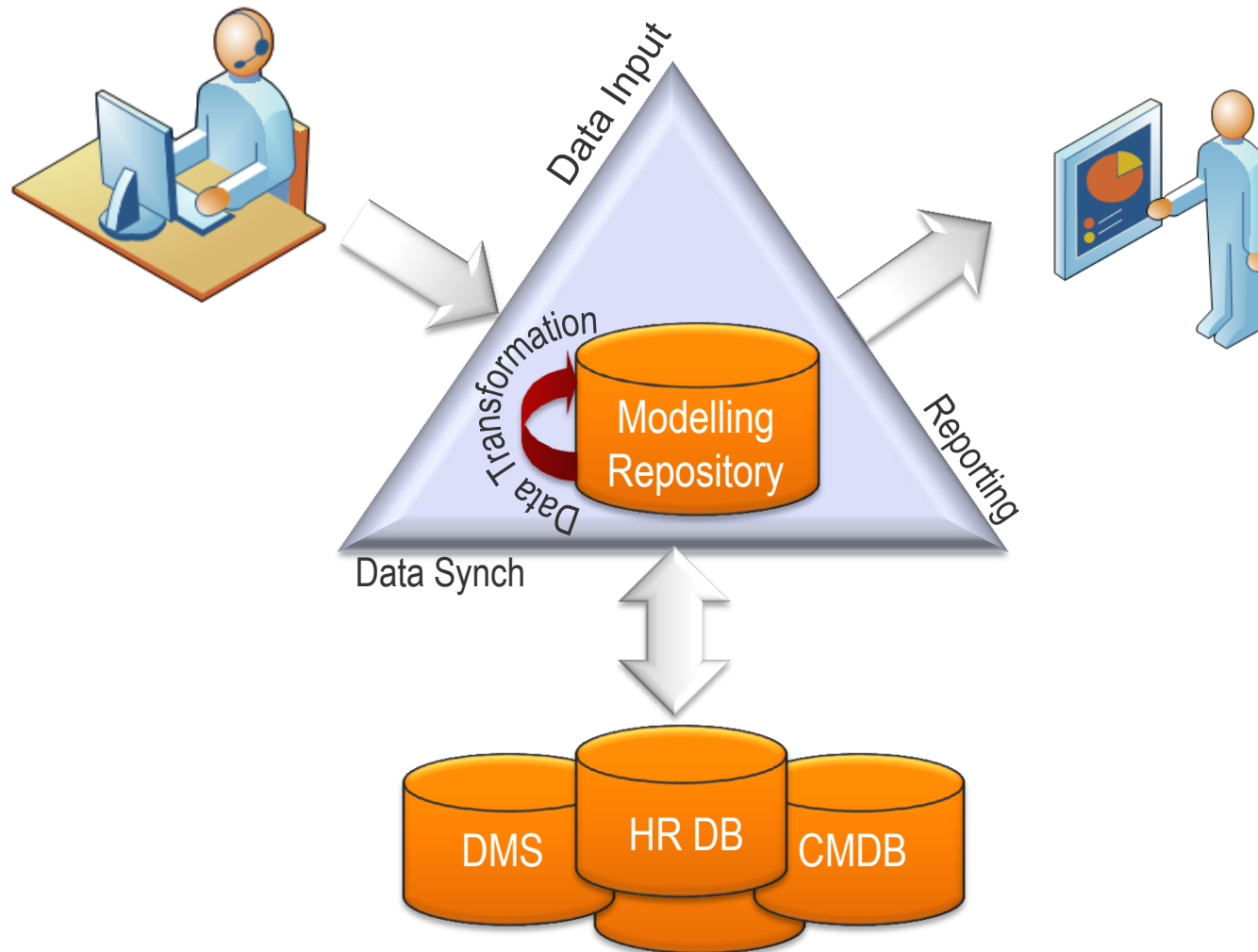
Copyright © 2012 avolution

Find Node

Search from beginning

# Modelling Tool Features

## API







# Modelling Tool Features

## Impact Analysis



We need to do some emergency maintenance on one of our application servers in our data centre.

Can you tell me  
What applications are running on it?  
Which processes will be affected  
Who should be notified?



# Modelling Tool Features

## Additional Features

- Simulation
- Model/DB Comparisons
- Versioning
- Repository workspaces
- Reverse and forward engineering
- Import/Export capabilities (e.g. Visio, Excel, other modelling tools)
- Integration with other systems (e.g. ERP, DMS)
- Integration with BPM & Workflow Tools

# Resources

## TOGAF 9 Tool Certification

THE *Open* GROUP

Home | Login | Sitemap

Search

Subject Areas | Get Involved | Standards | **Certifications** | Events | Consortia | Software | Publications | About Us

### Certifications

- Product Certification
  - Certification Partnership
  - ArchiMate®
  - POSIX®
  - TOGAF®**
  - UNIX®
- Overview
- Professional Certifications
- Certification For Consortia and Associations
- Test Suites

### TOGAF® 9 Tool Certification Register

Organization	Tool Name	First Registered	Renewal	Conformance Statement	Certificate
alfabet AG	planningIT 7.1 and later	22 June 2012	21 June 2014		
Avolution	ABACUS 4.0 or later	23 May 2012	22 May 2014		
BIZZdesign	Architect 3	18 July 2012	17 July 2014		
IBM	System Architect 11.4 and later	19 June 2012	18 June 2014		
QR Systems, Inc.	theBTcloud V1.5 and later	15 May 2012	14 May 2014		
Troux Technologies, Inc	Troux Transformation Platform 9.x or later	3 April 2012	2 April 2014		

[Link to the TOGAF 9 Certification Program site.](#)

The Open Group Platinum Members: Capgemini, hp, IBM, Kingdee, ORACLE, All Open Group Members

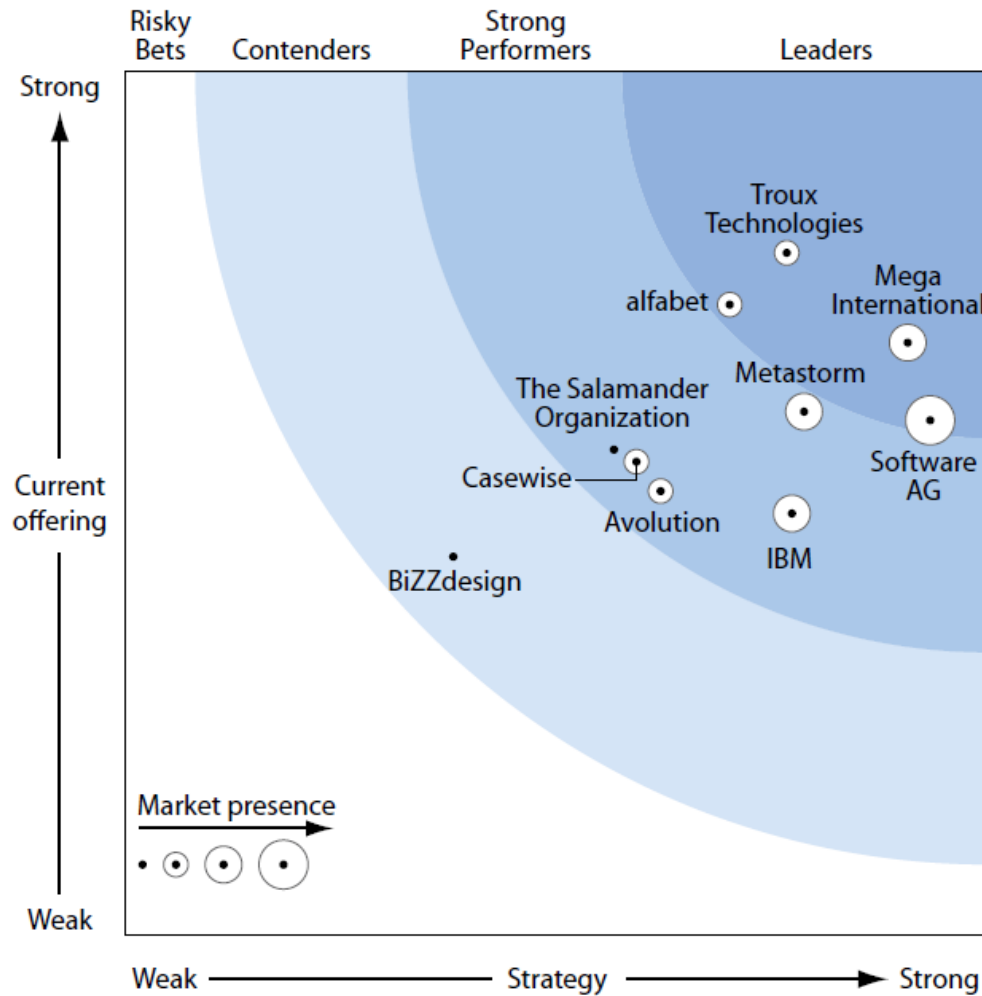
Contacts | News | Standards Process | Privacy | Legal

© The Open Group 1995 - 2012

<http://www.opengroup.org/certifications/togaf9-program/ts-register>

# Resources

## The Forrester Wave: Enterprise Architecture Management Suites



Q2 2011